



octo plus 21

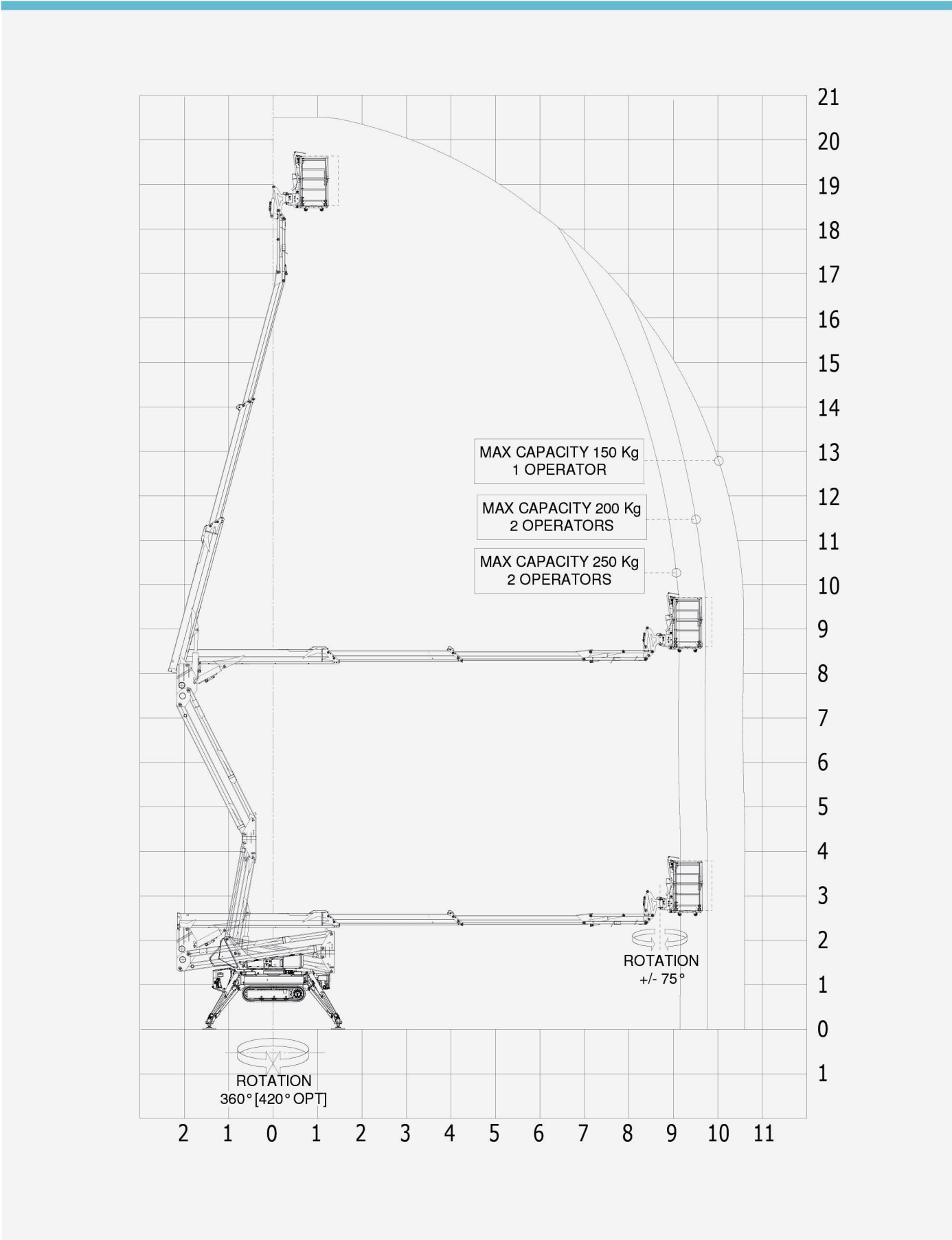


ENG

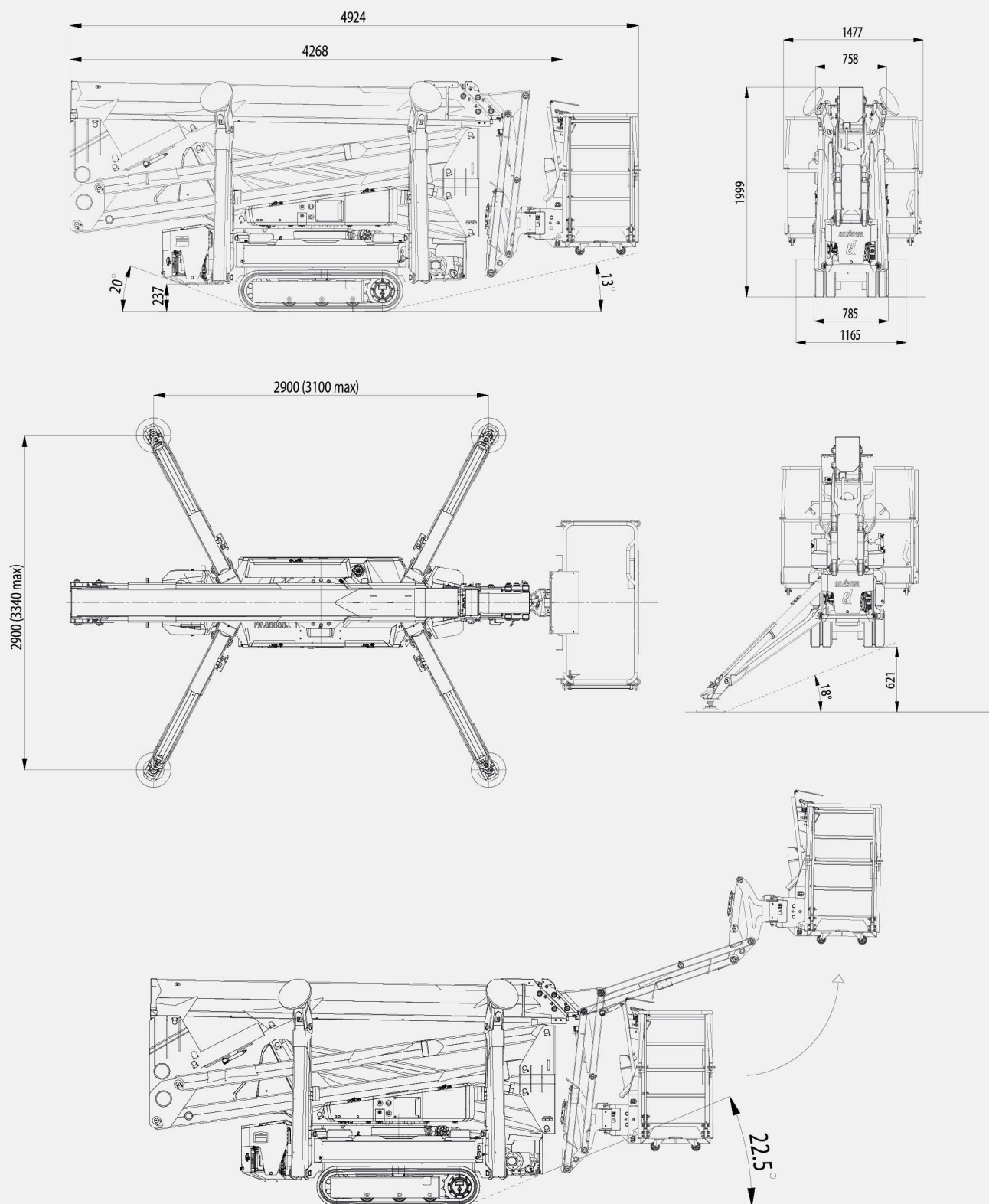


OIL & STEEL
AERIAL PLATFORMS

Work area



Technical drawings



Technical features

Max working height	20.7 m	Basket height	1.1 m
Max platform height	18.7 m	Basket length	1.4 m
Max horizontal working outreach	10.6 m	Basket width	0.7 m
Up and over height	8.2 m	Transport length	5 m
Max load capacity	250 kg	Transport length without basket	4.3 m
Aerial part controls	Wired control - Radio remote control OPT	Transport height	1.99 m
Outriggers - Crawler controls	Wired control - Radio remote control OPT	Min transport width	0.785 m
Basket material and dimensions	Aluminium 1.4 x 0.7 x 1.1 m	Max chassis height from the ground	0.25 m
Jib - working degree	116°	Tracks dimensions	1.42 x 0.25 m
Jib - degree of rotation	NA	Open outriggers footprint	2.9 x 2.9 m
Basket - degree of rotation	+/- 75°	Semi-open outriggers footprint	NA
Column - degree of rotation	+/- 180°	Closed outriggers footprint	NA
Stabilization on a ground slope of	18°	Outrigger plate dimensions	φ 0.3 m
Stabilization height	0.63 m	Min total weight	2850 kg
Tracks width (Closed-Open)	0.785 - 1.165 m	Max ground pressure on tracks	0.8 daN/cm ²
Max slope allowed in travel mode	35% (30% with battery pack)	Max ground pressure on stabilizers	4.92 daN/cm ²
Max travel speed	2.5 km/h (1.6 km/h with battery pack)	Max reaction of stabilizers	1545 daN
Variable outriggers footprint	NA	Combustion engine STD	Gasoline Honda Igx390 11.7HP
Homing / Memory function	Optional	Fuel tank	6 l
Automatic stabilization	✓	Electric motor STD	1-phase 2.2 kW 230Vac
Load - Unload system	✓	Combustion engine OPT	Diesel Hatz 1B50E 10 HP
Emergency lowering system	✓	Battery pack OPT *	73.6 V - 7.4 kWh - 4kW Engine
*Combustion engine is excluded			

STANDARD EQUIPMENT	OPTIONAL
Proportional electro-hydraulic controls with wired control	1 person aluminium basket 0.8 m
Tracks driven by variable displacement motors and braking system	Aluminium basket 1.8 m
Extendable tracks	7" Display on column
Battery AGM 95Ah	Remote control with display and cable/battery charger in the basket
40 L oil tank	Increased column rotation +/-210°
Easily removable chassis protection covers	Diesel Hatz 1B50E 10 HP CAN engine with 5L tank
Automatic stabilization and slope sensor	7.4 kWh - 73.6V battery pack 72V 4kW engine Full charge: 5.5h
Emergency lowering valves and hand pump	White non-marking tracks
Aluminium basket 1.4 m with ladder	Junction debris protection kit
110 V socket in basket	Emergency pump 12Vdc 1.5kW
Double USB charging socket in the basket	1-phase electric motor 110Vac / 50Hz / 1.1kW
Black tracks	1-phase electric motor 220Vac / 60Hz / 2.2kW
4" Display on column	Double air-water line
380mm hydraulically extendable undercarriage	Homing / Memory function
Internal telescopic cylinder Hoses and cables inside the boom	Lateral storage box
Load / unload system to allow an easy load on trailers and trucks	12Vdc light in basket
1-phase electric motor 220Vac / 50Hz / 2.2kW	Outrigger pads ϕ 200 mm
Electronic RPM control	7" Display protection
3 travel speeds	Cable for radio control in the basket
Anticorrosion treatment, stainless steel screws	7" and wired/remote control display logo customization
Machine start-up button on column	Aluminium basket 1.4 m - right side entrance
Manual emergency controls on column	Painting different from standard
Key allowing to bypass mechanical failure in case of emergency	Customized labels
Removable basket with set of wheels for transportation when dismantled	Outrigger pads
Master-slave hydraulic leveling system	Two security harnesses kit
Engines start-up using wired control or the display on column	Basket proximity sensor kit (anti-collision)
Counterbalance valves on cylinders	Activation of only one chosen work area with consequent block of the other areas
Pressure relief valves	Extended warranty programs
Hour meter	
24 months warranty	



PM OIL&STEEL SPA

S. Cesario sul Panaro
IT - 41018 - Modena
Via G.Verdi, 22

Tel.: +39 059 936811
Fax: +39 059 936800

info@oilsteel.com
www.oilsteel.com



Oil&Steel is a brand of Manitex International